

U of Albany Campus Center

This expansion of the University at Albany's historic 1960s Campus Center reinvigorates Edward Durrell Stone's original work.

Designed to complement the existing historic context the project created a vibrant and active centerpiece for students faculty and visitors.

A 22,000 SF East Addition enhances food service operations with a new double height dining room with views to the north, east, and south.

The 57,000 SF West Addition includes a 400-seat Auditorium, a Multi-Use Rehearsal space, student offices and resource centers.

A 45,000 SF renovation of the existing food service and dining hall also incorporates a new entrance stair.

- The Building program includes:
- Auditorium Building Addition
- Dining Facility Addition and Renovation
- Wellness/Fitness Center
- Student Activity Spaces

The Student Center Expansion provides a fluid connection to the University's interconnected buildings and assets.

Serving as a gateway to and from the campus community the facility provides spaces that engage and support student involvement.



Building Area: (sf)

140,000 +/- SF

Cost per Square Foot:

\$320

Construction Cost

\$45 Million

Date of Substantial Completion:

November 2018

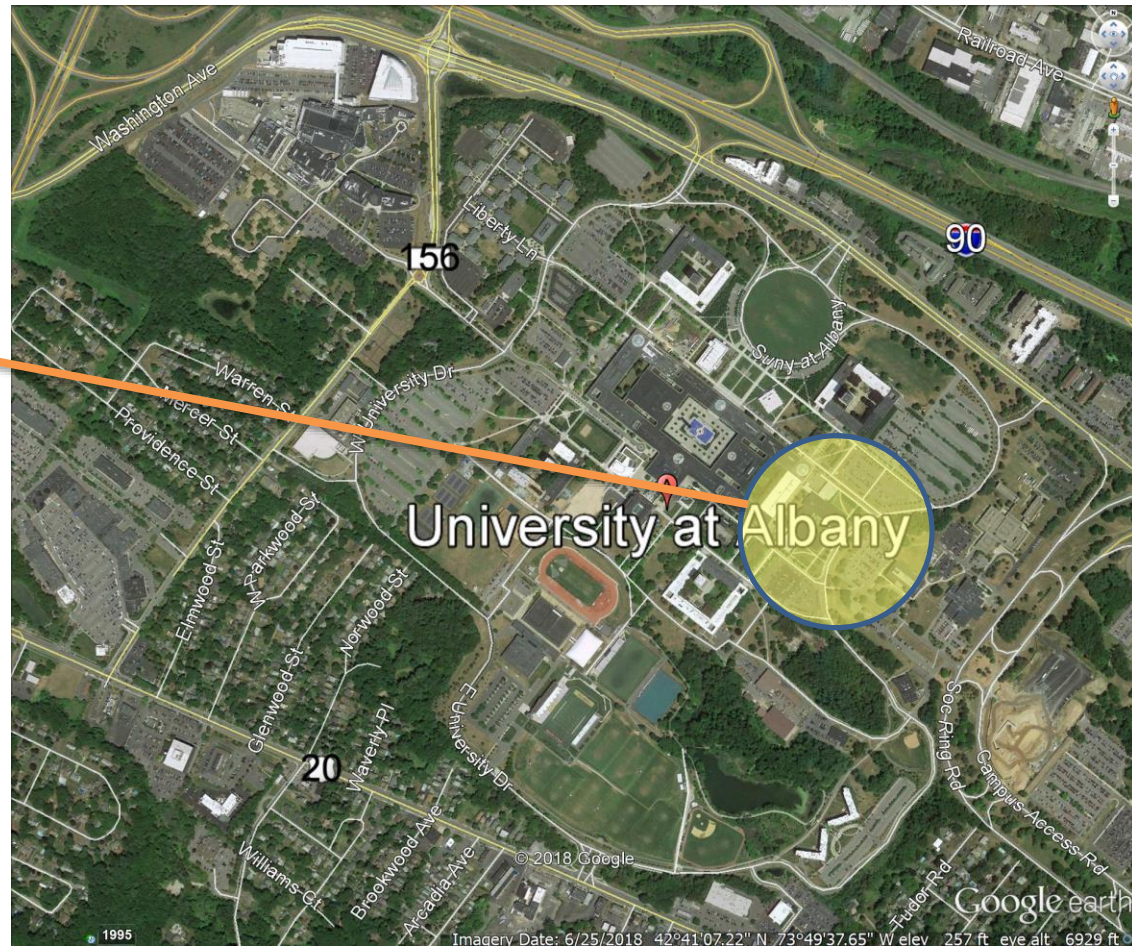
Location of Project:

Albany, New York

Type of Project:

Large Project Institutional

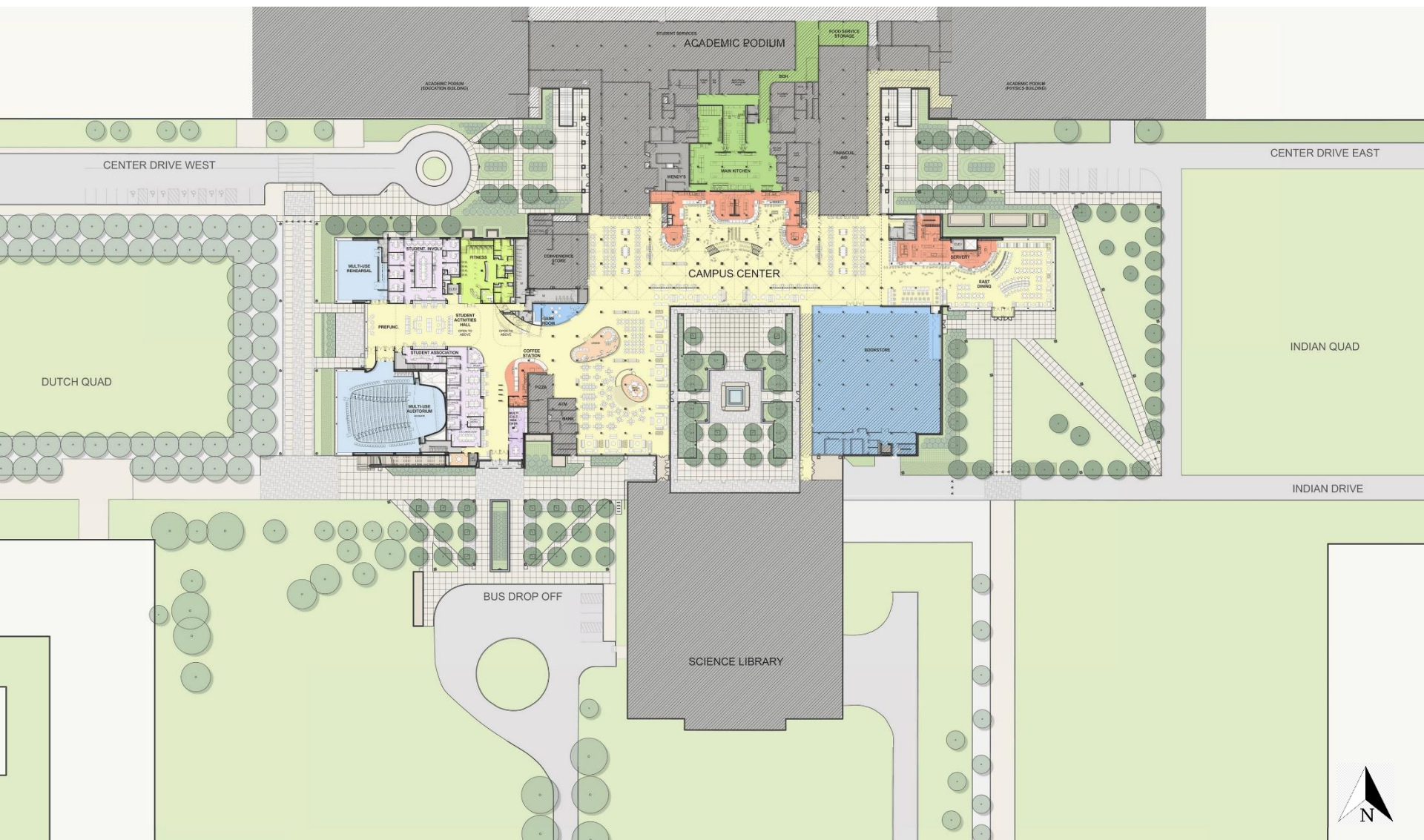
Project Site



U of Albany Campus Center

Site Location

The project site is located at the southern edge of the NY State University at Albany's campus complex.



U of Albany Campus Center

Floor Plan

The existing Student Center was an important central component of the university's campus complex. The additions expanded capacity while enhancing existing functions.



U of Albany Campus Center

South Elevation

The massing, configuration and materials of the addition were designed to complement the original Edward Durell Stone architecture.



U of Albany Campus Center

Central Atrium

The new Student Center Expansion serves as a prominent gateway to and from the campus grounds. Its new spaces engage and support student involvement, providing much needed student centered activities spaces that can encourage social interaction and flexible use.



U of Albany Campus Center

South Elevation

A new glazed entry and stair provides an anchoring element to the existing courtyard.



U of Albany Campus Center

Pedestrian Circulation

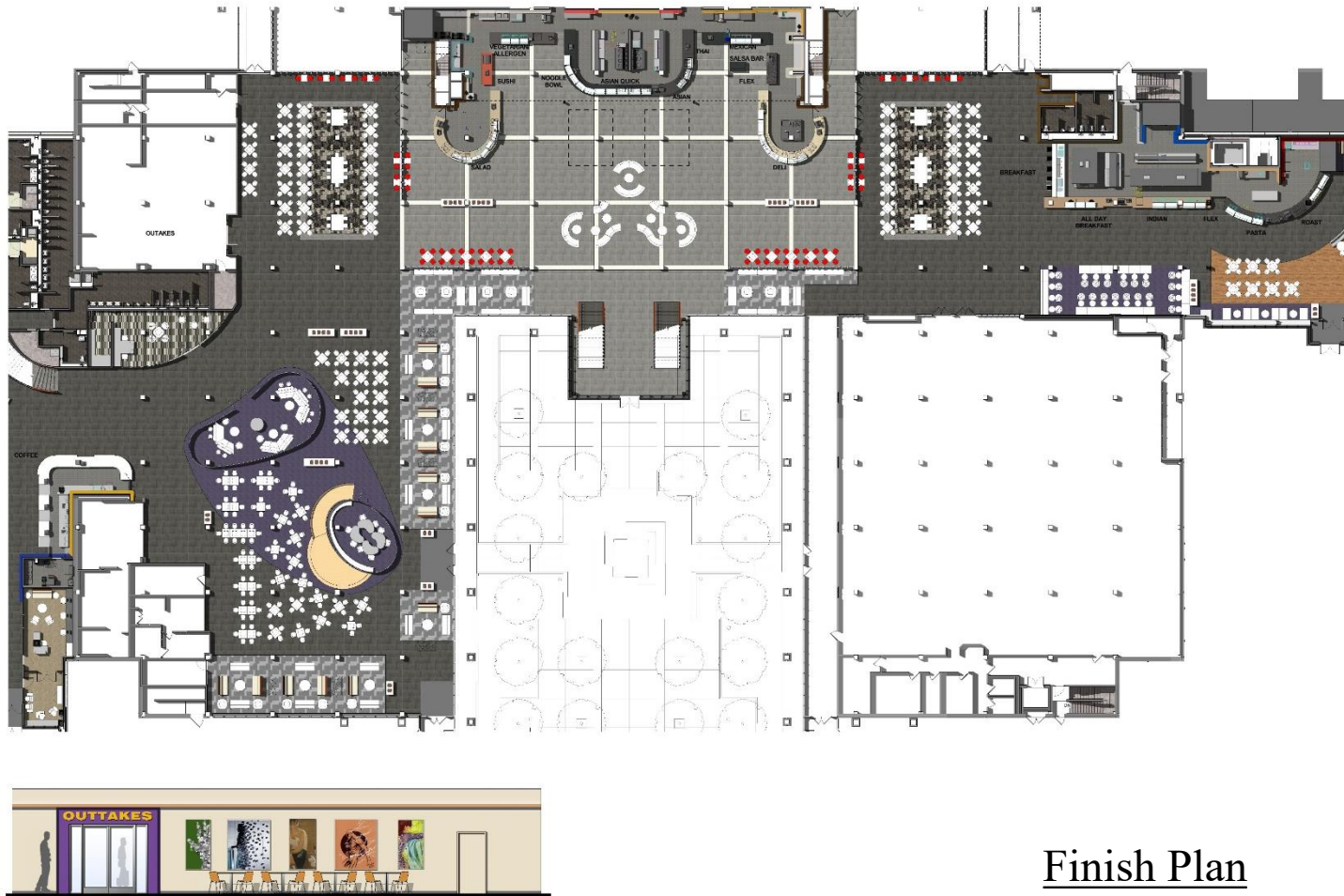
Existing central circulation zones were renovated and expanded to provide casual work spaces. Historic ceiling vaults and monumental light fixtures were restored and added lighting enhanced the associated spaces.



U of Albany Campus Center

Work/Study Spaces

Areas for focused collaborative study were designed to provide sound controlled space and visual interest.



Finish Plan

U of Albany Campus Center

Dining Services

The existing dining service areas were comprehensively renovated, increasing the variety of dining offerings and venues.



U of Albany Campus Center

Dining Spaces

The South addition provided expanded dining capacity and a light filled study area.

West Elevation



South Elevation



Courtyard Stair Pavilion



U of Albany Campus Center

Exterior Concept

Exterior building elevations were carefully designed to complement the existing historic context.